



LITTLE MANSIONS LTD

Specialising in Lettings & Property Management



16 Tasman Drive

Stafford ST16 3JY

£750 PCM

- Stafford
- Flat
- Part - Furnished
- Gas Central Heating
- Council Tax Band A
- Modern
- Suit professional single person
- EPC Rating: C
- Allocated Parking
- 1 Bedroom



Beautifully presented stunning ground-floor apartment ideally located within easy reach of Stafford Town Centre, the Technology Park, and County Hospital. Finished to an exceptionally high standard throughout, this property showcases outstanding attention to detail.

The accommodation comprises a stylish modern kitchen with integrated appliances including a fridge/freezer, double oven, hob, microwave, and washing machine, a bright and comfortable lounge, a spacious double bedroom with fitted wardrobe, and an immaculate contemporary bathroom featuring a shower over the bath.

This impressive apartment would be ideally suited to a single professional seeking high-quality accommodation in a convenient location.

Pay a cash deposit of £865. Pets are accepted by negotiation.

Disclaimer: Every effort has been made to ensure the description, details and photos are an accurate reflection of the let however there may be slight variances.

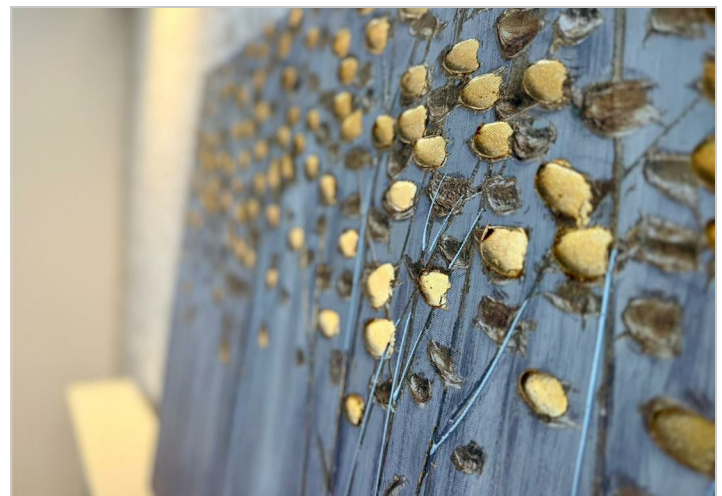
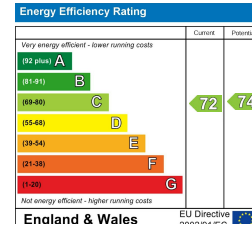
To book a viewing visit www.little-mansions.co.uk/property and book through our website to submit your details



Area Map



Energy Efficiency Graph



These particulars, whilst believed to be accurate are set out as a general outline only for guidance and do not constitute any part of an offer or contract. Intending purchasers should not rely on them as statements of representation of fact, but must satisfy themselves by inspection or otherwise as to their accuracy. No person in this firm's employment has the authority to make or give any representation or warranty in respect of the property.

8 Eastgate Street Stafford, Staffordshire, ST16 2NQ
 Tel: 01785227881 Email: stafford@little-mansions.co.uk www.little-mansions.co.uk